

2-BEDROOM

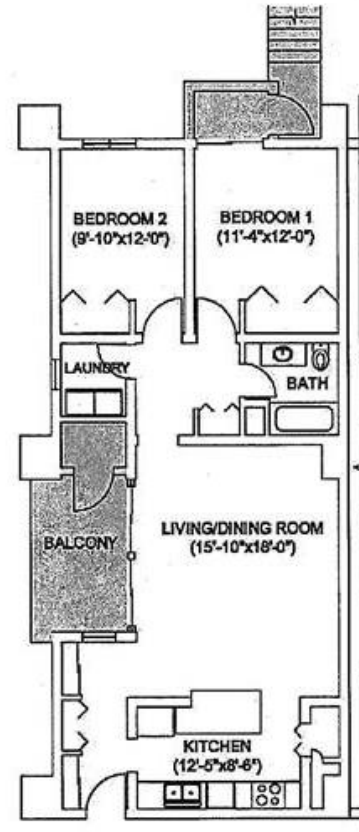
TOWER UNITS

Per CFASINST11101.12 (series) Military Family Housing offer is based on rank and family composition and not pet requirements or location preference.



FLOOR PLAN

Hario Village 2-Bedroom Tower



Unit Type GSF: 1043 SF
Areas Not Included in GSF: ■
Year Built: 1994
Year Renovated: NA

ENTRYWAY



KITCHEN



LAUNDRY ROOM



LIVING/ DINNING



BEDROOM







BATHROOM



STORAGE



2-BEDROOM

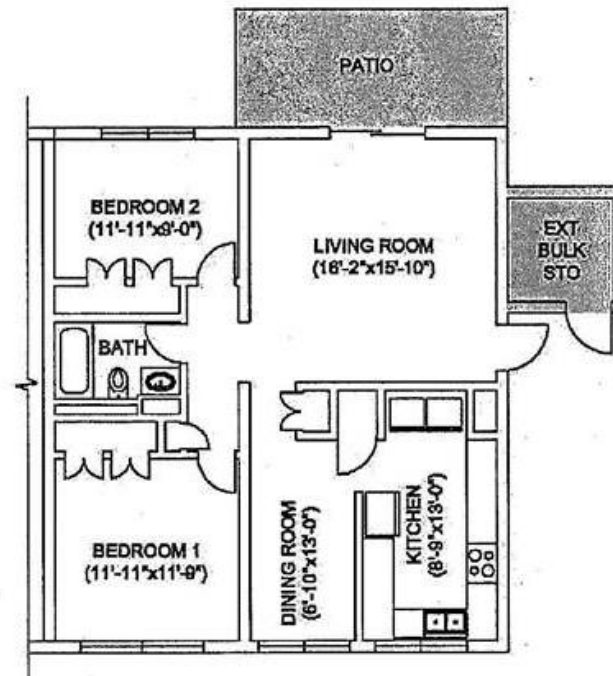
GARDEN STYLE APARTMENT

Per CFASINST11101.12 (series) Military Family Housing offer is based on rank and family composition and not pet requirements or location preference.



FLOOR PLAN

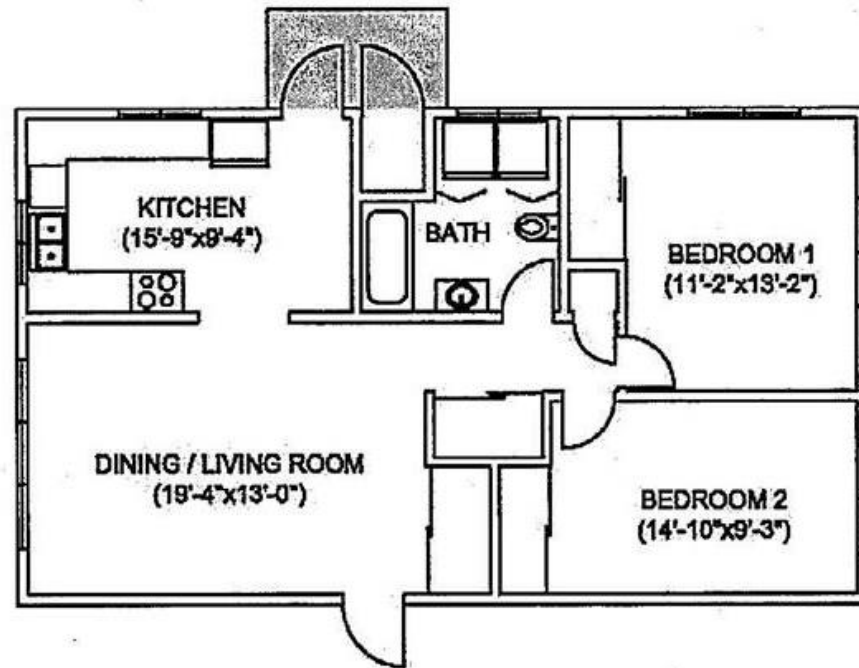
Hario Village 2-Bedroom Garden Style Apartment



| | |
|----------------------------|---------|
| Unit Type GSF: | 1022 SF |
| Areas Not Included in GSF: | ■ |
| Year Built: | 1988 |
| Year Renovated : | 2012 |

FLOOR PLAN

Dragon Vale 2-Bedroom Garden Style Apartment



| | |
|----------------------------|--------|
| Unit Type GSF: | 988 SF |
| Areas Not Included in GSF: | ■ |
| Year Built: | 1968 |
| Year Renovated : | 2010 |

LIVING ROOM





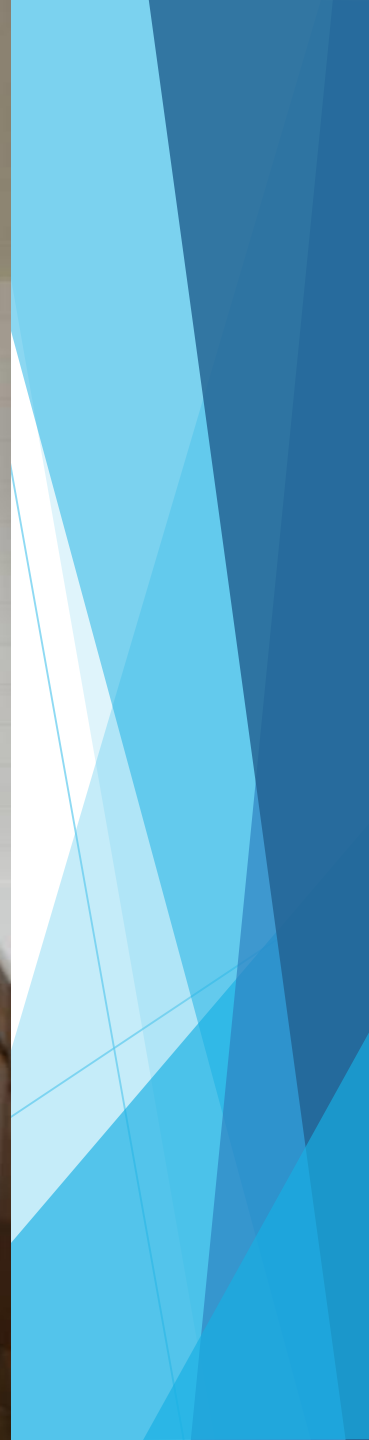
DINNING ROOM







LAUNDRY



KITCHEN



HALLWAY



BEDROOM











BATHROOM



STORAGE

